

OFFICE SUITE AVAILABLE



The Roberts Center

This highly visible executive office building is located at 1500 North Market Street. Situated in close proximity to the Downtown Business and Entertainment District, this suburban office complex features class "A" finishes in a contemporary styled, professionally landscaped and maintained setting. The Roberts Center's tenant mix includes CPAs, legal, insurance, sales oriented businesses and distribution users. Available spaces, which vary in size, can be designed to fit the individual tenants' needs. Owner/Licensed Real Estate Agent. 01/31/2024

- Professional Office Building
- AT&T Fiber Ready Certification
- Comcast Services
- Located on Major Traffic Artery
- Centrally Located
- Attractive Lease Rates
- Conference Room Facility
- Ample Parking
- Excellent Visibility and Access
- On-Site Management



BRUCE ROBERTS

REALTOR®

Office: 1-318-221-1226

www.TheRobertsCenter.com

Roberts Property Management, Inc.

1500 NORTH MARKET

SUITE R-300

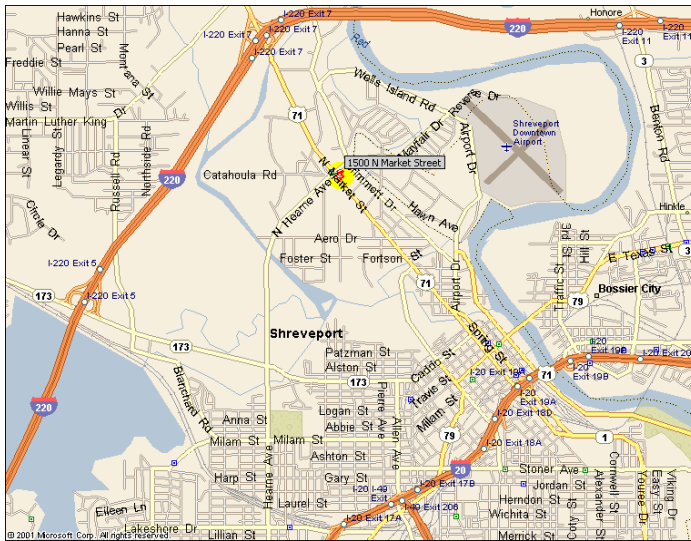
SHREVEPORT, LA 71107

FAX: 1-318-226-0965

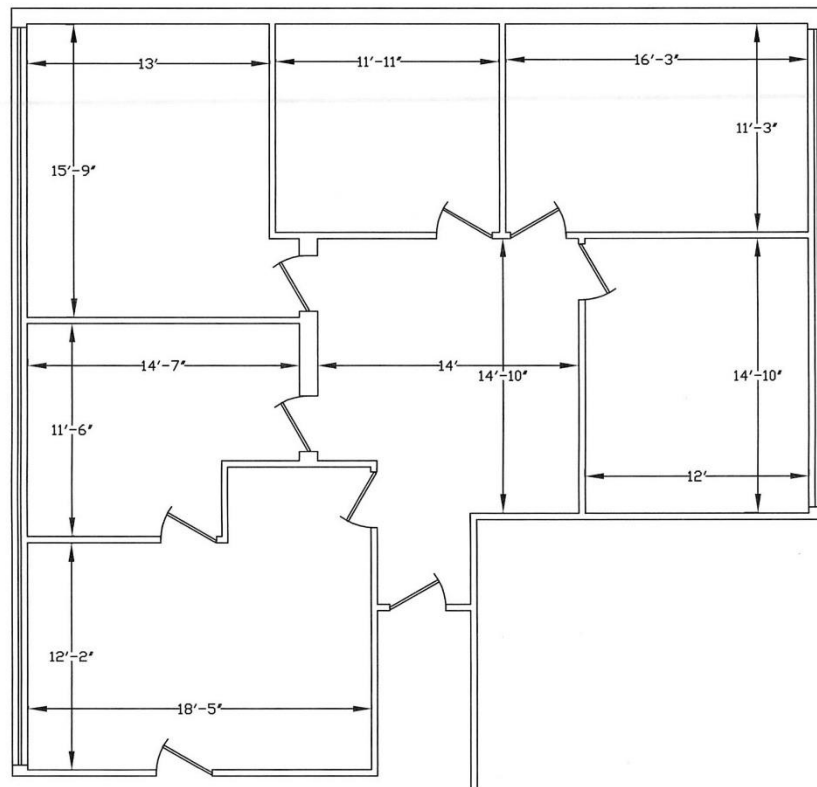
EMAIL: BRUCE@ROBERTSCO.COM

LICENSED BY LOUISIANA REAL ESTATE COMMISSION





Located in the North Shreveport Business District, this two-story office building offers strong visibility and excellent access to I-220, I-20, I-49, Clyde Fant Parkway, Shreveport's Entertainment District, North Caddo and Bossier Parish, and only 2 minutes from downtown Shreveport.



Suite B-100

1,390 Square Feet
Lease Amount \$1,680 per month

All information herein is believed to be accurate, but is not warranted and no liability or errors or omissions is assumed. Prices as stated herein and property availability is subject to change and/or sale or lease without prior notice, and all sizes and dimensions are subject to correction.

